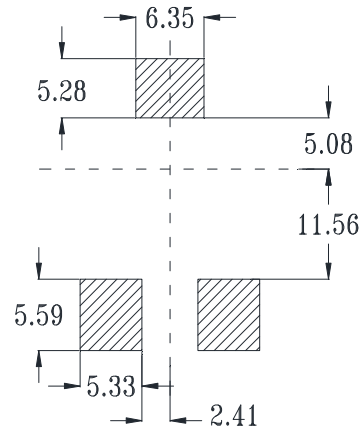
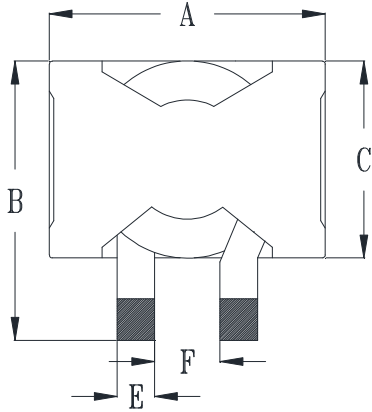


# CYNTEC CO., LTD.

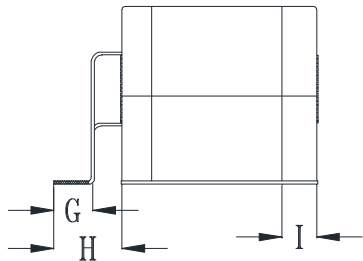
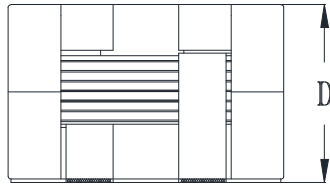
## 乾坤科技股份有限公司

### HMQ281X Series

#### Mechanical dimensions



Suggested PWB Layout(mm)



UNIT : mm

A = 27.90 MAX

B = 27.94 MAX

C = 19.80 MAX

D = 17.78 MAX

E = 3.80 TYP

F = 6.63±0.51

G = 3.80 MIN

H = 6.90 TYP

I = 4.00 TYP

#### Electrical Characteristics: @25°C, 500kHz, 1V

Delta P/N	L <sup>1</sup> (uH)	Li (uH)	DCR (mΩ) MAX	Isat <sup>2</sup> (A)	Ir <sup>3</sup> (A)	D (mm) MAX
HMQ2815-1R5	1.5±15%	20% drop	1.43	115	36	15.4
HMQ2815-100	10	20% drop	2.05	21.5	30	15.36
HMQ2818-6R8	6.8	20% drop	2.86	45	28	17.78
HMQ2818-100	10	20% drop	2.86	31.2	28	17.78
HMQ2818-150	15	20% drop	2.86	21.2	28	17.78
HMQ2818-220	22±20%	20% drop	2.86	14	28	17.78

1. Tolerance of inductance : ± 10%
2. Isat is the DC current which causes the inductance drop not less than Li
3. Ir is the DC current which causes the surface temperature of the part increase approximately 45 °C.
4. Operating temperature: -40°C to 125°C (Self-temperature rise included).